



# ICY DOCK<sup>®</sup>

Bringing Innovation & **Difference**

## Product Guide

## About Us / OEM Services

Tailored to your product specifications, ICY DOCK offers flexible designs and houses a dedicated product development team to quickly turn your dream into reality.



- 04 About ICY DOCK
- 05 OEM / ODM Solutions

## ToughArmor Series

Full-metal, rugged SSD/HDD drive cage built for most demanding environments to safeguard your critical data.



- 06 For 3.5" Drive Bay ..... U.2 / U.3 SSD Mobile Rack  
M.2 SSD Mobile Rack  
2.5" SAS / SATA Mobile Rack
- 10 For 5.25" Drive Bay ..... U.2 / U.3 SSD Mobile Rack  
M.2 SSD Mobile Rack  
2.5" SAS / SATA Mobile Rack
- 16 For Dual / Triple 5.25" Drive Bay ..... 2.5" SAS / SATA Mobile Rack
- 17 External 2.5" SATA Drive Enclosure ..... 2.5" SAS / SATA Mobile Rack
- 17 For (Ultra) Slim ODD Drive Bay ..... M.2 SSD Mobile Rack  
2.5" SAS / SATA Mobile Rack
- 19 For PCIe expansion slot ..... U.2 / U.3 SSD Mobile Rack  
M.2 SSD Mobile Rack  
2.5" SAS / SATA Mobile Rack

## ExpressCage Series

State of the art SSD/HDD mobile rack with unique tool-less drive installation tray designed for easy hot swap and quick installation of drives while maintaining the innate protection of a drive tray.



- 20 For 3.5" Drive Bay ..... 2.5" SAS / SATA Mobile Rack
- 20 For 5.25" Drive Bay ..... 2.5" SAS / SATA Mobile Rack

## flexiDOCK Series

Aimed for studio applications, flexiDock SSD/HDD docking stations are built for easy hot swapping between different data drives and individual power buttons for separate workflow control.



- 22 For 3.5" Drive Bay ..... U.2 / U.3 SSD Mobile Rack  
2.5" SAS / SATA Mobile Rack
- 22 For 5.25" Drive Bay ..... 2.5" SAS / SATA Mobile Rack
- 23 For Dual 5.25" Drive Bay ..... 3.5" SAS / SATA Mobile Rack

## EZConvert Series

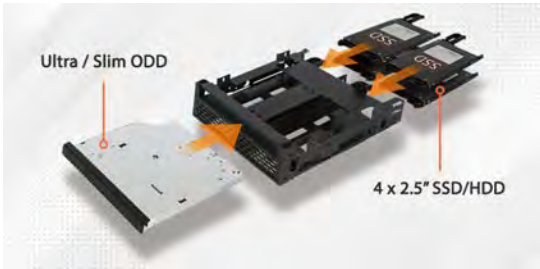
Fully-enclosed, tool-less 2.5" to 3.5" SSD/HDD drive adapter with exact same dimensions and screw hole locations of a 3.5" HDD drive, making them the first choice for adapting 2.5" SSD form factor inside 3.5" HDD desktop PCs, servers and workstations.



- 24 For Internal 2.5" Drive Bay
- 24 For Internal 3.5" Drive Bay
- 25 For PCIe expansion slot

## Bracket Series

Creating more flexibility and maximizing the space efficiency of a standard device/drive bay by allowing accommodations for multiple drives/devices in a given space.



- 26 For 3.5" Drive Bay
- 27 For 5.25" Drive Bay

## ICYNano & EZ-Adapter

One of a kind tool-less drive installation NVMe SSD enclosure designed as a tool for media professionals or power users to store, transfer and remove their valuable data while being fully protected by ICY DOCK's 3 year warranty.



- 28 External M.2 SSD Enclosure
- 28 External U.2 SSD Enclosure
- 29 External 2.5" / M.2 SSD Enclosure

## 3.5" HDD Mobile Racks

Made with quality material and unique ID design, ICY DOCK 3.5" HDD/SSD cage offers convenience for users to hot swap or transport drives in and out of the system with ease.



- 30 For 5.25" Drive Bay
- 31 For Dual / Triple 5.25" Drive Bays

## Add cards & Cables

The ICY DOCK cables are verified with ICY DOCK drive enclosures, HBA/RAID cards, and meet UL20744 certification and safety requirements for quality and performance.



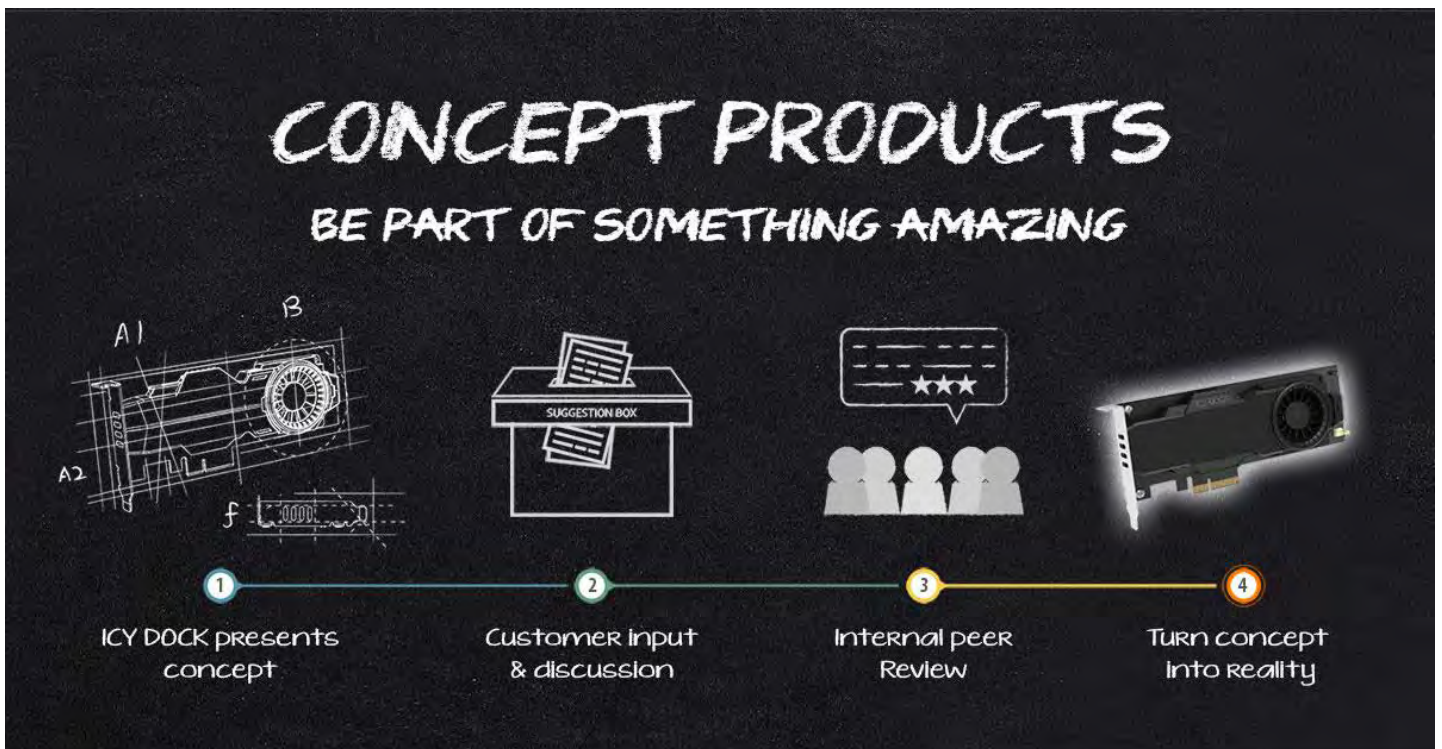
- 32 Interface Cables
- 32 High-Speed Add-on Cards

# Concept Products

Constantly innovating concept products to complement enterprise storage applications based on user experiences & feedbacks.



- 33 For 5.25" Drive Bay ..... E1.S SSD Mobile Rack  
U.2 / U.3 SSD Mobile Rack  
2.5" SAS / SATA Mobile Rack
- 34 For Dual 5.25" Drive Bay ..... U.2 / U.3 SSD Mobile Rack
- 34 External M.2 / U.2 SSD Enclosure ..... U.2 SSD Mobile Rack  
M.2 SSD Mobile Rack
- 35 For PCIe Extension Slot ..... E3.S SSD Mobile Rack  
E1.S SSD Mobile Rack  
M.2 SSD Mobile Rack



ICYDOCK believes that innovations will revolutionize computer data storage by bringing new design and form factor into the market. We are always trying to deliver the highest quality products to exceed customer expectations. As we release new product to the market, we continue to bring new concept products, prototypes designed, modified and adapted to meet customer's requests and valuable feedbacks.

Our Sales, marketing and engineering team will carefully review every submitted concept product idea and respond to the creator. The concept product page will be showcased on our website for market feedback. Once the idea is proven to be sustainable by the market's demand, like Midas' hand, we will turn the suggestion into, not gold in this case, but into a real product. On top of that, the person who provided the original idea will receive a working concept product before we officially release it to the public.



# ICY DOCK®

Bringing Innovation & Difference

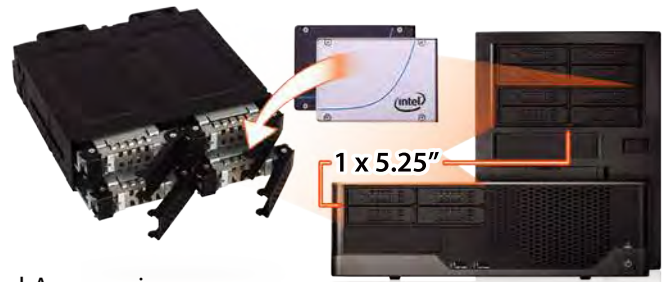


## About ICY DOCK:

ICY DOCK is a privately held company with 27 years of experience in designing, manufacturing, branding and distributing computer data storage and enclosure peripherals, especially in industrial and rugged computer data storage. We believe our innovations will revolutionize computer data storage by bringing new designs and form factors into the market, providing improvements and convenience in computer data management for small businesses, government, industrial, military, and medical industries.

ICY DOCK became a global leader in the computer data storage industry, utilizing designing and manufacturing capabilities since 1992. Adhering to strict manufacturing guidelines and having creative product designing teams in California, USA, ICY DOCK delivers the highest quality products to exceed customer expectations and offers one of a kind products to satisfy customer's needs.

- 27-year of product design experiences
- Product research & development team located in California, USA.
- Various USA patented products from ICY DOCK's original design.
- Long product lifecycle with average more than ten years.
- Industry-leading 3-year standard warranty and 5-year warranty on the ToughArmor series.
- Offer removable drive functionality, hot-swap capabilities, modular design aiming for user convenience in computer data storage field.
- Ability to make revisions to our designs to fit the needs of system integrators, manufacturers, and government.
- Strategically incorporated branch offices throughout the world to provide immediate support to local customers.

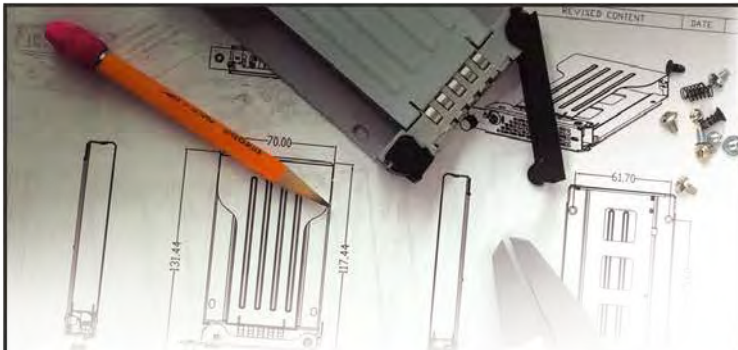


## In Partnership with:



**OEM/ODM Solutions:**

Having decades of experience in innovating difference, ICY DOCK is truly an expert in designing and customizing data storage peripherals. From consumer graded to enterprise ranked data storage systems, any level of expertise is not a compromise to us. Since our first establishment in 1992, ICY DOCK has led the industry in designing revolutionary products such as the first SCSI module and the first 2.5" to 3.5" SSD converter. This is why top-tier companies such as GE, HP and Google choose and trust ICY DOCK's product to safeguard their mission-critical data. It is our prime responsibility to provide satisfaction and guarantee to any of your special OEM or ODM requests. On the top of all that, having privately owned factories and a specialized OEM engineering team, ICY DOCK has the ability to allow fast turn-around rate, customized manufacture process and provide top-of-line service to your valuable OEM/ODM requests.



**Design and Manufacture**

ICY DOCK has its own experienced engineering team designated to provide the best service and solution for your mission critical projects. Also, having 30 years of expertise in the field, ICY DOCK acquired the ability to withstand and accomplish the toughest project and will only bring perfection to meet your request.



**Quality Control**

ICY DOCK's factory is under the certification of ISO 9001: 2015. All of our products are ensured with highest standard by passing tedious quality assurances and numerous stress tests. Other certification, such as CE, RoHS, UL, ML-STD and more, can also be complied if requested by customer.



**Production Facility**

ICY DOCK has its own production facilities for best product regulation and fast production turn around rate.



**Global Support**

Having offices located worldwide, ICY DOCK can provide pre- and post-sales customer service to our valuable customers anywhere.

## FOR 3.5" DRIVE BAY

### MB092VK-B



Drive Tray # MB991TRAY-B

2 x 2.5" NVMe U.2/U.3 SSD Backplane Mobile Rack with Slimline SAS Connector

- Fits standard 3.5" drive bay
- Hot-pluggable 2 x 2.5" U.2/U.3 SSD
- Supports NVMe 64Gbps
- Fits 5-9.5mm drive height
- Rugged full metal construction
- Safeguard 2-segment key lock system
- Supports Tri-mode controller cards with SFF-9402 pin-out

SFF-8654 4i Connector



### MB601VK-B



Drive Tray # MB991TRAY-B

1 x 2.5" NVMe U.2/U.3/SATA HDD/SSD Backplane Mobile Rack (147mm Depth)

- Fits standard 3.5" drive bay
- Hot-pluggable 1 x 2.5" HDD/SSD
- Supports NVMe 64Gbps/SATA III
- Fits 5-15mm drive height
- Rugged full metal construction
- Safeguard 2-segment key lock system

SFF-8639 Connector



### MB601VK-1B



Drive Tray # MB601TP-B

1 x 2.5" NVMe U.2/U.3/SATA HDD/SSD Backplane Mobile Rack with U.2 Connector (168.7mm Depth)

- Fits standard 3.5" drive bay
- Hot-pluggable 1 x 2.5" HDD/SSD
- Supports NVMe 64Gbps/SATA III
- Fits 5-15mm drive height
- Rugged full metal construction
- Safeguard 2-segment key lock system

SFF-8639 Connector



### MB601M2K-1B



Drive Tray # MB601TP-1B

1 x NVMe M.2 SSD Backplane Mobile Rack with U.2 Connector

- Fits standard 3.5" drive bay
- Hot-pluggable 1 x M.2 NVMe PCIe SSD
- Supports NVMe 64Gbps per channel
- Fits 2230/2242/2260/2280/22110 M.2 SSD
- Rugged full metal construction
- Safeguard 2-segment key lock system

SFF-8639 Connector



## MB833M2K-B

### 1 x NVMe M.2 SSD Backplane Mobile Rack with Mini-SAS HD Connector



Drive Tray # MB834TP-B

- Fits standard 3.5" drive bay
- Hot-pluggable 1 x M.2 NVMe PCIe SSD
- Supports NVMe 64Gbps per channel
- Fits 2230/2242/2260/2280/22110 M.2 SSD
- Rugged full metal construction
- Safeguard 2-segment key lock system



SFF-8643 Connector



## MB833MK-B V2

### 1 x NVMe M.2 SSD Backplane Mobile Rack with Slimline SAS Connector

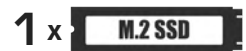


Drive Tray # MB834TP-B

- Fits standard 3.5" drive bay
- Hot-pluggable 1 x M.2 NVMe PCIe SSD
- Supports NVMe 64Gbps per channel
- Fits 2230/2242/2260/2280/22110 M.2 SSD
- Rugged full metal construction
- Safeguard 2-segment key lock system
- Supports Tri-mode controller cards with SFF-9402 pin-out



SFF-8654 4i Connector



## MB834M2K-B

### 2 x NVMe M.2 SSD Backplane Mobile Rack with Mini-SAS HD Connector



Drive Tray # MB834TP-B

- Fits standard 3.5" drive bay
- Hot-pluggable 2 x M.2 NVMe PCIe SSD
- Supports NVMe 64Gbps per channel
- Fits 2230/2242/2260/2280/22110 M.2 SSD
- Rugged full metal construction
- Safeguard 2-segment key lock system



SFF-8643 Connector



## MB834MK V2

### 2 x NVMe M.2 SSD Backplane Mobile Rack with Slimline SAS Connector



Drive Tray # MB834TP-B

- Fits standard 3.5" drive bay
- Hot-pluggable 2 x M.2 NVMe PCIe SSD
- Supports NVMe 64Gbps per channel
- Fits 2230/2242/2260/2280/22110 M.2 SSD
- Rugged full metal construction
- Safeguard 2-segment key lock system
- Supports Tri-mode controller cards with SFF-9402 pin-out



SFF-8654 4i Connector





## MB491SKL-B

### 1 x 2.5" SATA/SAS HDD/SSD Backplane Mobile Rack with Thumbscrew Design



Drive Tray # MB491TKL-B

- Fits standard 3.5" drive bay
- Hot-swappable 1 x 2.5" HDD/SSD
- Supports SATA III/SAS 3.0 (single channel)
- Fits 5-15mm drive height
- Rugged full metal construction
- Key & thumbscrew dual lock system



Available in Q2

## MB491SKL-1B

### 1 x 2.5" SATA/SAS HDD/SSD Backplane Mobile Rack with Thumbscrew Design and Water-Resistant Cover



Drive Tray # MB491TKL-B

- Fits standard 3.5" drive bay
- Hot-swappable 1 x 2.5" HDD/SSD
- Supports SATA III/SAS 3.0 (single channel)
- Fits 5-15mm drive height
- Rugged full metal construction
- Key & thumbscrew dual lock system
- IP65 waterproof and dustproof design



## MB492SKL-B

### 2 x 2.5" SATA/SAS HDD/SSD Backplane Mobile Rack with Thumbscrew Design



Drive Tray # MB492TKL-B

- Fits standard 3.5" drive bay
- Hot-swappable 2 x 2.5" HDD/SSD
- Supports SATA III/SAS 3.0 (single channel)
- Fits 5-9.5mm drive height
- Rugged full metal construction
- Key & thumbscrew dual lock system



## MB991IK-B

### 1 x 2.5" SATA/SAS HDD/SSD Backplane Mobile Rack



Drive Tray # MB991TRAY-B

- Fits standard 3.5" drive bay
- Hot-swappable 1 x 2.5" HDD/SSD
- Supports SATA III/SAS 3.0 (dual channel)
- Fits 5-15mm drive height
- Rugged full metal construction
- Safeguard 2-segment key lock system



## MB991SK-B

### 1 x 2.5" SATA/SAS HDD/SSD Backplane Mobile Rack



Drive Tray # MB991TRAY-B

- Fits standard 3.5" drive bay
- Hot-swappable 1 x 2.5" HDD/SSD
- Supports SATA III/SAS 3.0 (single channel)
- Fits 5-15mm drive height
- Rugged full metal construction
- Safeguard 2-segment key lock system



## MB992SK-B

### 2 x 2.5" SATA/SAS HDD/SSD Backplane Mobile Rack



Drive Tray # MB992TRAY-B  
Key-Lock Tray # MB996TK-B

- Fits standard 3.5" drive bay
- Hot-swappable 2 x 2.5" HDD/SSD
- Supports SATA III/SAS 3.0 (single channel)
- Fits 5-9.5mm drive height
- Rugged full metal construction
- Safeguard 2-segment key lock system



## MB992SKR-B

### 2 x 2.5" SATA HDD/SSD Backplane Mobile Rack with RAID 0/1/BIG/JBOD



Drive Tray # MB992TRAY-B  
Key-Lock Tray # MB996TK-B

- Fits standard 3.5" drive bay
- Hot-swappable 2 x 2.5" HDD/SSD
- Supports SATA III
- Fits 5-9.5mm drive height
- Rugged full metal construction
- Safeguard 2-segment key lock system
- Built-in hardware RAID 0/1/BIG/JBOD



## MB993SK-B

### 3 x 2.5" SATA/SAS HDD/SSD Backplane Mobile Rack



Drive Tray # MB993TP-B

- Fits standard 3.5" drive bay
- Hot-swappable 3 x 2.5" HDD/SSD
- Supports SATA III/SAS 3.0 (single channel)
- Fits 5-7mm drive height
- Rugged full metal construction
- Safeguard 2-segment key lock system



## FOR 5.25" DRIVE BAY

### MB105VP-B



Drive Tray # MB991TRAY-B  
Key-Lock Tray # MB994TK-B

2 x 2.5" NVMe U.2/U.3 SSD Backplane Cage with Slimline SAS Connector

- Fits standard 5.25" drive bay
- Hot-pluggable 2 x 2.5" U.2/U.3 SSD
- Supports NVMe 64Gbps per channel
- Fits 5-15mm drive height
- Rugged full metal construction
- Supports Tri-mode controller cards with SFF-9402 pin-out

SFF-8654 8i Connector



### MB118VP-B



Drive Tray # MB992TRAY-B  
Key-Lock Tray # MB996TK-B

6 x 2.5" NVMe U.2/U.3 SSD Backplane Cage with Slimline SAS Connector

- Fits standard 5.25" drive bay
- Hot-pluggable 6 x 2.5" U.2/U.3 SSD
- Supports NVMe 64Gbps per channel
- Fits 5-9.5mm drive height
- Rugged full metal construction
- Supports Tri-mode controller cards with SFF-9402 pin-out

SFF-8654 8i Connector



### MB699VP-B



Drive Tray # MB991TRAY-B  
Key-Lock Tray # MB994TK-B

4 x 2.5" NVMe U.2/U.3 SSD Backplane Cage with OCUlink Connector

- Fits standard 5.25" drive bay
- Hot-pluggable 4 x 2.5" U.2/U.3 SSD
- Supports NVMe 64Gbps per channel
- 4 x miniSAS HD (SFF-8643) connector
- Fits 5-15mm drive height
- Rugged full metal construction

SFF-8643 Connector



### MB699VP-B V3



Drive Tray # MB991TRAY-B  
Key-Lock Tray # MB994TK-B

4 x 2.5" NVMe U.2/U.3 SSD Backplane Cage with OCUlink Connector

- Fits standard 5.25" drive bay
- Hot-pluggable 4 x 2.5" U.2/U.3 SSD
- Supports NVMe 64Gbps per channel
- 4 x OCUlink (SFF-8612) connector
- Fits 5-15mm drive height
- Supports Tri-mode controller cards with SFF-9402 pin-out

SFF-8612 Connector



## MB720M2K-B

### 4 x NVMe M.2 SSD Backplane Cage with Mini-SAS HD Connector



Drive Tray # MB720TK-B

- Fits standard 5.25" drive bay
- Hot-pluggable 4 x M.2 NVMe PCIe SSD
- Supports NVMe 64Gbps per channel
- 4 x miniSAS HD(SFF-8643) connector
- Fits 2230/2242/2260/2280/22110 M.2 SSD
- Tool-less M.2 drive installation
- Individual 2-segment key lock trays

SFF-8643 Connector



## MB720MK-B V3

### 4 x NVMe M.2 SSD Backplane Cage with OCuLink Connector



Drive Tray # MB720TK-B

- Fits standard 5.25" drive bay
- Hot-pluggable 4 x M.2 NVMe PCIe SSD
- Supports NVMe 64Gbps per channel
- 4 x OCuLink (SFF-8612) connector
- Fits 2230/2242/2260/2280/22110 M.2 SSD
- Tool-less M.2 drive installation
- Supports Tri-mode controller cards with SFF-9402 pin-out

SFF-8612 Connector



## MB873MP-B V2

### 8 x NVMe M.2 SSD Backplane Cage with OCuLink Connector



Drive Tray # MB840TP-B

- Fits standard 5.25" drive bay
- Hot-pluggable 8 x M.2 NVMe PCIe SSD
- Supports NVMe 64Gbps per channel
- 8 x OCuLink (SFF-8612) connector
- Fits 2230/2242/2260/2280/22110 M.2 SSD
- Tool-less M.2 drive installation
- Rugged full metal construction
- Supports Tri-mode controller cards with SFF-9402 pin-out

SFF-8612 Connector



## MB872MP-B

### 12 x SATA M.2 SSD Backplane Cage with OCuLink Connector



Drive Tray # MB840TP-B

- Fits standard 5.25" drive bay
- Hot-swappable 12 x M.2 SATA SSD
- Supports SATA III
- 3 x OCuLink (SFF-8612) connector
- Fits 2230/2242/2260/2280/22110 M.2 SSD
- Tool-less M.2 drive installation
- Rugged full metal construction

SFF-8612 Connector



## MB602SPO-B

### 2 x 2.5" SATA/SAS HDD/SSD & (Ultra) Slim ODD Backplane Cage

(Slim ODD not included)



Drive Tray # MB991TRAY-B  
Key-Lock Tray # MB994TK-B

- Fits standard 5.25" drive bay
- Hot-swappable 2 x 2.5" HDD/SSD
- Fits 1 x Ultra Slim or Slim ODD
- Supports SATA III/SAS 3.0 (single channel)
- Fits 5-15mm drive height
- Rugged full metal construction



## MB604SPO-B

### 4 x 2.5" SATA/SAS HDD/SSD & (Ultra) Slim ODD Backplane Cage

(Slim ODD not included)



Drive Tray # MB992TRAY-B  
Key-Lock Tray # MB996TK-B

- Fits standard 5.25" drive bay
- Hot-swappable 4 x 2.5" HDD/SSD
- Fits 1 x Ultra Slim or Slim ODD
- Supports SATA III/SAS 3.0 (single channel)
- Fits 5-9.5mm drive height
- Rugged full metal construction



## MB606SPO-B

### 6 x 2.5" SATA/SAS HDD/SSD & Ultra Slim ODD Backplane Cage

(Slim ODD not included)



Drive Tray # MB998TP-B  
Key-Lock Tray # MB998TK-B

- Fits standard 5.25" drive bay
- Hot-swappable 6 x 2.5" HDD/SSD
- Fits 1 x Ultra Slim ODD
- Supports SATA III/SAS 3.0 (single channel)
- Fits 5-7mm drive height
- Rugged full metal construction



## MB607SP-B

### 4 x 2.5" SATA/SAS HDD/SSD Backplane Cage



Drive Tray # MB991TRAY-B  
Key-Lock Tray # MB994TK-B

- Fits standard 5.25" drive bay
- Hot-swappable 4 x 2.5" HDD/SSD
- Supports SATA III/SAS 3.0 (single channel)
- Fits 5-15mm drive height
- Rugged full metal construction
- Uses 1 x 15pin power for all 4 drives



## MB902SPR-B R1

### 2 x 2.5" SATA HDD/SSD Backplane Cage with RAID 1 & JBOD



Drive Tray # MB991TRAY-B  
Key-Lock Tray # MB994TK-B

- Fits standard 5.25" drive bay
- Hot-swappable 2 x 2.5" HDD/SSD
- Supports SATA III
- Fits 5-15mm drive height
- Rugged full metal construction
- Built-in hardware RAID 1 & JBOD



## MB994IKO-3SB

### 2 x 2.5" SATA/SAS HDD/SSD & Slim ODD Backplane Cage & Locking Trays

(Slim ODD not included)



Key-Lock Tray # MB994TK-B

- Fits standard 5.25" drive bay
- Hot-swappable 2 x 2.5" HDD/SSD & 1 x Slim ODD
- Supports SATA III/SAS 3.0 (dual channel)
- Fits 5-15mm drive height
- Rugged full metal construction
- Individual 2-segment key lock trays



## MB994IPO-3SB

### 2 x 2.5" SATA/SAS HDD/SSD & Slim ODD Backplane Cage

(Slim ODD not included)



Drive Tray # MB991TRAY-B  
Key-Lock Tray # MB994TK-B

- Fits standard 5.25" drive bay
- Hot-swappable 2 x 2.5" HDD/SSD & 1 x Slim ODD
- Supports SATA III/SAS 3.0 (dual channel)
- Fits 5-15mm drive height
- Rugged full metal construction



## MB994SK-1B

### 4 x 2.5" SATA/SAS HDD/SSD Backplane Cage with Locking Trays



Key-Lock Tray # MB994TK-B

- Fits standard 5.25" drive bay
- Hot-swappable 4 x 2.5" HDD/SSD
- Supports SATA III/SAS 3.0 (single channel)
- Fits 5-15mm drive height
- Rugged full metal construction
- Individual 2-segment key lock trays



## MB994SP-4S

### 4 x 2.5" SATA/SAS HDD/SSD Backplane Cage



Drive Tray # MB991TRAY-B  
Key-Lock Tray # MB994TK-B

- Fits standard 5.25" drive bay
- Hot-swappable 4 x 2.5" HDD/SSD
- Supports SATA III/SAS 3.0 (single channel)
- Fits 5-15mm drive height
- Rugged full metal construction



4 x 

## MB994SP-4SB-1

### 4 x 2.5" SATA/SAS HDD/SSD Backplane Cage



Drive Tray # MB991TRAY-B  
Key-Lock Tray # MB994TK-B

- Fits standard 5.25" drive bay
- Hot-swappable 4 x 2.5" HDD/SSD
- Supports SATA III/SAS 3.0 (single channel)
- Fits 5-15mm drive height
- Rugged full metal construction
- Uses 1 x 4pin power for all 4 drives



4 x 

## MB996SK-6SB

### 6 x 2.5" SATA/SAS HDD/SSD Backplane Cage with Locking Trays



Key-Lock Tray # MB996TK-B

- Fits standard 5.25" drive bay
- Hot-swappable 6 x 2.5" HDD/SSD
- Supports SATA III and SAS 3.0 (single channel)
- Fits 5-9.5mm drive height
- Rugged full metal construction
- Uses 2 x 4pin power for all 6 drives
- Individual 2-segment key lock trays



6 x 

## MB996SP-6SB

### 6 x 2.5" SATA/SAS HDD/SSD Backplane Cage



Drive Tray # MB992TRAY-B  
Key-Lock Tray # MB996TK-B

- Fits standard 5.25" drive bay
- Hot-swappable 6 x 2.5" HDD/SSD
- Supports SATA III and SAS 3.0 (single channel)
- Fits 5-9.5mm drive height
- Rugged full metal construction
- Uses 2 x 4pin power for all 6 drives



6 x 

## MB998SK-B

### 8 x 2.5" SATA/SAS HDD/SSD Backplane Cage with Locking Trays



Key-Lock Tray # MB998TK-B

- Fits standard 5.25" drive bay
- Hot-swappable 8 x 2.5" HDD/SSD
- Supports SATA III and SAS 3.0 (single channel)
- Fits 5-7mm drive height
- Rugged full metal construction
- Uses 2 x 15pin power for all 8 drives
- Individual 2-segment key lock trays



## MB998SP-B

### 8 x 2.5" SATA/SAS HDD/SSD Backplane Cage



Drive Tray # MB998TP-B  
Key-Lock Tray # MB998TK-B

- Fits standard 5.25" drive bay
- Hot-swappable 8 x 2.5" HDD/SSD
- Supports SATA III and SAS 3.0 (single channel)
- Fits 5-7mm drive height
- Rugged full metal construction
- Uses 2 x 15pin power for all 8 drives



## MB998IP-B

### 8 x 2.5" SATA/SAS HDD/SSD Backplane Cage



Drive Tray # MB998TP-B  
Key-Lock Tray # MB998TK-B

- Fits standard 5.25" drive bay
- Hot-swappable 8 x 2.5" HDD/SSD
- Supports SATA III and SAS 3.0 (single channel)
- Fits 5-7mm drive height
- Rugged full metal construction
- Uses 2 x 15pin power for all 8 drives



SFF-8643 Connector



## FOR DUAL 5.25" DRIVE BAY

### MB508SP-B

8 x 2.5" SATA/SAS HDD/SSD Backplane Cage with Mini-SAS HD connector



Drive Tray # MB991TRAY-B  
Key-Lock Tray # MB994TK-B

- Fits standard 2 x 5.25" drive bay
- Hot-swappable 8 x 2.5" HDD/SSD
- Supports SATA III and SAS 3.0 (single channel)
- Fits 5-15mm drive height
- Rugged full metal construction
- Uses 2 x miniSAS HD port for accessing 8 drives

SFF-8643 Connector



8 x 

### MB516SP-B

16 x 2.5" SATA/SAS HDD/SSD Backplane Cage with Mini-SAS HD connector



Drive Tray # MB998TP-B  
Key-Lock Tray # MB998TK-B

- Fits standard 2 x 5.25" drive bay
- Hot-swappable 16 x 2.5" HDD/SSD
- Supports SATA III and SAS 3.0 (single channel)
- Fits 5-7mm drive height
- Rugged full metal construction
- Uses 4 x miniSAS HD port for accessing 16 drives

SFF-8643 Connector



16 x 

## FOR TRIPLE 5.25" DRIVE BAY

### MB924IP-B

24 x 2.5" SATA/SAS HDD/SSD Backplane Cage with Mini-SAS HD Connector



Drive Tray # MB998TP-B  
Key-Lock Tray # MB998TK-B

- Fits standard 3 x 5.25" drive bay
- Hot-swappable 24 x 2.5" HDD/SSD
- Supports SATA III / SAS 3.0 (single channel)
- Fits 5-7mm drive height
- Rugged full metal construction
- Uses 6 x miniSAS HD port for accessing 24 drives

SFF-8643 Connector



24 x 

## EXTERNAL 2.5" SATA DRIVE ENCLOSURE

### MB991U3-1SB

1 x 2.5" SATA HDD/SSD USB 3.2 Gen1 External Enclosure



Drive Tray # MB991TRAY-B

- Supports 1 x 2.5" HDD/SSD
- USB 3.2 Gen1 interface with UASP support
- Fits 5-15mm drive height
- Rugged full metal construction
- Safeguard 2-segment key lock system
- Compatible with ToughArmor drive trays including: MB411(excluding 2B), MB508, MB516, MB924, MB839, MB60X(excluding MB601), MB991, MB992, MB994, MB996, MB998 series



Universal Drive Tray Slot  
Fits ToughArmor Drive Trays

## FOR (ULTRA) SLIM ODD DRIVE BAY

### MB852M2PO-B

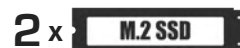
2 x M.2 NVMe PCIe SSD Backplane Mobile Rack for 9.5mm Ultra Slim Optical Drive Device



Drive Tray # MB840TP-B

- Fits standard Ultra Slim ODD drive bay
- Hot-pluggable 1 x M.2 NVMe PCIe SSD
- Supports NVMe 64Gbps per channel
- Fits 2230/2242/2260/2280/22110 M.2 SSD
- Tool-less M.2 drive installation
- Uses 2 x OCuLink (SFF-8612) connector

SFF-8612 Connector



## MB411SKO-B

1 x 2.5" SATA/SAS HDD/SSD Backplane Mobile Rack for 12.7mm Slim Optical Drive Device with Locking Tray



Key-Lock Tray # MB996TK-B

- Fits standard Slim ODD/FDD drive bay
- Hot-swappable 1 x 2.5" HDD/SSD
- Supports SATA III and SAS 3.0 (single channel)
- Fits 5-9.5mm drive height
- Rugged full metal construction
- Individual 2-segment key lock trays
- Uses floppy 4pin power connector



## MB411SPO-B

1 x 2.5" SATA/SAS HDD/SSD Backplane Mobile Rack for 12.7mm Slim Optical Drive Device



Drive Tray # MB992TRAY-B  
Key-Lock Tray # MB996TK-B

- Fits standard Slim ODD/FDD drive bay
- Hot-swappable 1 x 2.5" HDD/SSD
- Supports SATA III and SAS 3.0 (single channel)
- Fits 5-9.5mm drive height
- Rugged full metal construction
- Uses floppy 4pin power connector



## MB411SPO-1B

1 x 2.5" SATA HDD/SSD Backplane Mobile Rack for 12.7mm Slim Optical Drive Device



Drive Tray # MB992TRAY-B  
Key-Lock Tray # MB996TK-B

- Fits standard Slim ODD drive bay
- Hot-swappable 1 x 2.5" HDD/SSD
- Supports SATA III
- Fits 5-9.5mm drive height
- Rugged full metal construction
- Uses standard slimline SATA connector



## MB411SPO-2B

1 x 2.5" SATA HDD/SSD Backplane Mobile Rack for 9.5mm Ultra Slim Optical Drive Device



Drive Tray # MB993TP-B

- Fits standard Ultra Slim ODD drive bay
- Hot-swappable 1 x 2.5" HDD/SSD
- Supports SATA III
- Fits 5-7mm drive height
- Rugged full metal construction
- Uses standard slimline SATA connector



## FOR PCIE EXPANSION SLOT

### MB111VP-B

1 x 2.5" NVMe U.2/U.3 SSD Removable Mobile Rack



Drive Tray # MB992TRAY-B  
Key-Lock Tray # MB996TK-B

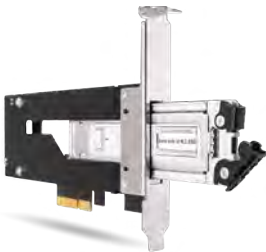
- Fits standard PCIe 4.0 x4/x8/x16 slot
- Removable 1 x 2.5" U.2/U.3 SSD
- Supports up to 64Gbps transfer speed
- Fits 5-9.5mm drive height
- Rugged full metal construction



1 x 

### MB840M2P-B

1 x M.2 NVMe SSD to PCIe 4.0 x4 Removable Mobile Rack



Drive Tray # MB840TP-B

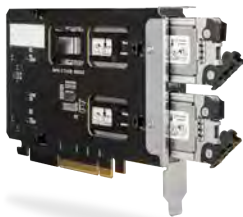
- Fits standard PCIe 4.0 x4/x8/x16 slot
- Removable 1 x M.2 NVMe PCIe SSD
- Supports up to 64Gbps transfer speed
- Fits 2230/2242/2260/2280/22110 M.2 SSD
- Tool-less M.2 drive installation
- Rugged full metal construction



1 x 

### MB842MP-B

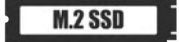
2 x M.2 NVMe SSD to PCIe 4.0 x8 Removable Mobile Rack (PCIe Bifurcation Required)



Drive Tray # MB840TP-B

- Fits standard PCIe 4.0 x8/x16 slot
- Removable 2 x M.2 NVMe PCIe SSD
- Supports up to 64Gbps transfer speed
- Fits 2230/2242/2260/2280/22110 M.2 SSD
- Tool-less M.2 drive installation
- Rugged full metal construction



2 x 

### MB839SP-B

1 x 2.5" SATA HDD/SSD to PCIe 2.0 x1 Removable Mobile Rack



Drive Tray # MB992TRAY-B  
Key-Lock Tray # MB996TK-B

- Fits standard PCIe 2.0 x1/x4/x8/x16 slot
- Hot-swappable 1 x 2.5" HDD/SSD
- Supports SATA III
- Fits 5-9.5mm drive height
- Rugged full metal construction



1 x 

## FOR 3.5" DRIVE BAY

### MB741SP-B

1 x 2.5" SATA/SAS HDD/SSD Backplane Mobile Rack



Drive Tray # MB741TP-B

- Fits standard 3.5" drive bay
- Hot-swappable 1 x 2.5" HDD/SSD
- Supports SATA III and SAS 3.0 (single channel)
- Fits 5-15mm drive height
- Tool-less drive installation with Built-in tray screws



### MB742SP-B

2 x 2.5" SATA/SAS HDD/SSD Backplane Mobile Rack



Drive Tray # MB742TP-B

- Fits standard 3.5" drive bay
- Hot-swappable 2 x 2.5" HDD/SSD
- Supports SATA III and SAS 3.0 (single channel)
- Fits 5-9.5mm drive height
- Tool-less drive installation with Built-in tray screws



## FOR 5.25" DRIVE BAY

### MB322SP-B

2 x 2.5" SATA/SAS HDD/SSD Backplane Cage + 3.5" HDD/Device



Drive Tray # MB322TP-B

- Fits standard 5.25" drive bay
- Hot-swappable 2 x 2.5" HDD/SSD
- 1 x 3.5" HDD/device slot
- Supports SATA III and SAS 3.0 (single channel)
- Fits 5-9.5mm drive height
- Tool-less drive installation with Built-in tray screws



### MB324SP-B

4 x 2.5" SATA/SAS HDD/SSD Backplane Cage



Drive Tray # MB324TP-B

- Fits standard 5.25" drive bay
- Hot-swappable 4 x 2.5" HDD/SSD
- Supports SATA III and SAS 3.0 (single channel)
- Fits 5-12.5mm drive height
- Tool-less drive installation with Built-in tray screws



## MB326SP-B

### 6 x 2.5" SATA HDD/SSD Backplane Cage



Drive Tray # MB322TP-B

- Fits standard 5.25" drive bay
- Hot-swappable 6 x 2.5" HDD/SSD
- Supports SATA III
- Fits 5-9.5mm drive height
- Tool-less drive installation with Built-in tray screws



## MB038SP-B

### 8 x 2.5" SATA/SAS HDD/SSD Backplane Cage



Drive Tray # MB038TP-B

- Fits standard 5.25" drive bay
- Hot-swappable 8 x 2.5" HDD/SSD
- Supports SATA III and SAS 3.0 (single channel)
- Fits 5-7mm drive height



## MB732SPO-B

### 2 x 2.5" SATA/SAS HDD/SSD & (Ultra)Slim ODD Backplane Cage



Drive Tray # MB732TP-B

- Fits standard 5.25" drive bay
- Hot-swappable 2 x 2.5" HDD/SSD
- Fits 1 x Ultra Slim or Slim ODD
- Supports SATA III and SAS 3.0 (single channel)
- Fits 5-15mm drive height
- Tool-less drive installation with Built-in tray screws



FOR 3.5" DRIVE BAY

MB021VP-B

1 x 2.5" NVMe U.2/U.3 SSD Docking Backplane Mobile Rack



- Fits standard 3.5" drive bay
- Hot-pluggable 1 x 2.5" U.2/U.3 SSD
- Supports NVMe 64Gbps per channel
- Fits 5-15mm drive height
- Push button to eject drive
- Door-less design for easy drive swapping

SFF-8654 4i Connector



MB521SP-B

1 x 2.5" SATA/SAS HDD/SSD Docking Backplane Mobile Rack



- Fits standard 3.5" drive bay
- Hot-swappable 1 x 2.5" HDD/SSD
- Supports SATA III and SAS 3.0 (single channel)
- Fits 5-15mm drive height
- Push button to eject drive
- Door-less design for easy drive swapping



MB522SP-B

2 x 2.5" SATA/SAS HDD/SSD Docking Backplane Mobile Rack



- Fits standard 3.5" drive bay
- Hot-swappable 2 x 2.5" HDD/SSD
- Supports SATA III and SAS 3.0 (single channel)
- Fits 5-9.5mm drive height
- Push button to eject drive design
- Door-less design for easy drive swapping



FOR 5.25" DRIVE BAY

MB014SP-B R1

4 x 2.5" SATA/SAS HDD/SSD Docking Backplane Cage



- Fits standard 5.25" drive bay
- Hot-swappable 4 x 2.5" HDD/SSD
- Supports SATA III and SAS 3.0 (single channel)
- Fits 5-9.5mm drive height
- Individual drive power buttons
- Push button to eject drive design
- Door-less design for easy drive swapping



**MB024SP-B**

4 x 2.5" SATA/SAS HDD/SSD Docking Backplane Cage



- Fits standard 5.25" drive bay
- Hot-swappable 4 x 2.5" HDD/SSD
- Supports SATA III and SAS 3.0 (single channel)
- Fits 5-9.5mm drive height
- Pull drive to eject design
- Door-less design for easy drive swapping



**MB095SP-B**

2 x 2.5" + 3.5" SATA HDD/SSD Docking Backplane Cage



- Fits standard 5.25" drive bay
- Hot-swappable 2 x 2.5" + 3.5" HDD/SSD
- Supports SATA III
- Fits 2.5" drive up to 9.5mm height
- Pull drive to eject design
- Door-less design for easy drive swapping



**MB795SP-B**

2.5" + 3.5" SATA HDD/SSD Docking Backplane Cage



- Fits standard 5.25" drive bay
- Hot-swappable 2.5" + 3.5" HDD/SSD
- Supports SATA III
- Fits 2.5" drive up to 9.5mm height
- Supports full height 15mm when only use 2.5" drive
- Pull drive to eject design
- Door-less design for easy drive swapping



**FOR DUAL 5.25" DRIVE BAY**

**MB830SP-B**

3 x 3.5" SATA/SAS HDD Docking Backplane Cage



- Fits standard 2 x 5.25" drive bay
- Hot-swappable 3 x 3.5" HDD
- Supports SATA III and SAS 3.0 (single channel)
- Pull drive to eject design
- Door-less design for easy drive swapping





**FOR INTERNAL 2.5" DRIVE BAY**

**MB703M2P-B**

1 x M.2 SATA SSD Converter Adapter



- Fits standard 2.5" drive bay
- Hot-swappable 1 x M.2 SATA SSD
- Supports SATA III
- Fits 2230/2242/2260/2280 M.2 SSD
- Tool-less M.2 drive installation
- Same dimension as standard 2.5" SSD



**MB705M2P-B**

1 x M.2 NVMe PCIe SSD Converter Adapter



- Fits standard 2.5" drive bay
- Hot-pluggable 1 x M.2 NVMe PCIe SSD
- Supports up to 64Gbps transfer speed
- Fits 2230/2242/2260/2280 M.2 SSD
- Tool-less M.2 drive installation
- Same dimension as standard 2.5" U.2 SSD



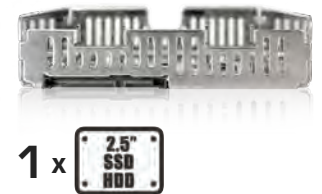
**FOR INTERNAL 3.5" DRIVE BAY**

**MB482SP-3B**

1 x 2.5" SATA/SAS HDD/SSD Converter Adapter



- Fits standard 3.5" drive bay
- Hot-swappable 1 x 2.5" HDD/SSD
- Supports SATA III and SAS 3.0 (single channel)
- Fits 5-15mm drive height
- Same dimension as standard 3.5" HDD
- Rugged full metal construction



**MB882SP-1S-1B**

1 x 2.5" SATA/SAS HDD/SSD Converter Adapter



- Fits standard 3.5" drive bay
- Hot-swappable 1 x 2.5" HDD/SSD
- Supports SATA III and SAS 3.0 (single channel)
- Fits 5-12.5mm drive height
- Tool-less 2.5" drive installation
- Same dimension as standard 3.5" HDD
- Easily secure drive w/ self-adjusting mechanism



## MB882SP-1S-2B

1 x 2.5" SATA/SAS HDD/SSD Converter Adapter



- Fits standard 3.5" drive bay
- Hot-swappable 1 x 2.5" HDD/SSD
- Supports SATA III and SAS 3.0 (single channel)
- Fits 5-12.5mm drive height
- Tool-less 2.5" drive installation
- Same dimension as standard 3.5" HDD



## MB882SP-1S-3B

1 x 2.5" SATA/SAS HDD/SSD Converter Adapter



(HDD not included)

- Fits standard 3.5" drive bay
- Hot-swappable 1 x 2.5" HDD/SSD
- Supports SATA III and SAS 3.0 (single channel)
- Fits 5-15mm drive height
- Tool-less 2.5" drive installation
- Same dimension as standard 3.5" HDD



## MB982SP-1S

1 x 2.5" SATA/SAS HDD/SSD Converter Adapter



- Fits standard 3.5" drive bay
- Hot-swappable 1 x 2.5" HDD/SSD
- Supports SATA III and SAS 3.0 (single channel)
- Fits 5-15mm drive height
- Tool-less 2.5" drive installation
- Same dimension as standard 3.5" HDD
- Rugged full metal construction



## PCI-E EXPANSION SLOT ENCLOSURES

### MB987M2P-1B

1 x M.2 NVMe SSD to PCIe 4.0 x4 Adapter with Heat Sink & PCIe Bracket



- Fits standard PCIe 4.0 x4/x8/x16 slot
- Support 1 x M.2 NVMe PCIe SSD
- Support up to 64Gbps transfer speed
- Fits 2230/2242/2260/2280/22110 M.2 SSD
- Tool-less M.2 drive installation
- Integrated heat sink and ample ventilation for excellent passive cooling



## FOR 3.5" DRIVE BAY

### MB082SP

#### 2 x 2.5" HDD/SSD Mounting Bracket



- Fits standard 3.5" drive bay
- Removable 2 x 2.5" HDD/SSD
- Fits 5-9.5mm drive height
- Tool-less 2.5" drive installation
- Rugged full metal construction

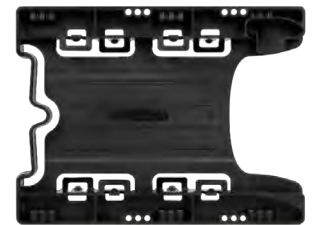


### MB290SP-B

#### 2 x 2.5" HDD/SSD Mounting Bracket



- Fits standard 3.5" drive bay
- Removable 2 x 2.5" HDD/SSD
- Fits 5-9.5mm drive height
- Tool-less 2.5" drive installation
- 60 screw holes provide max flexibility of installation

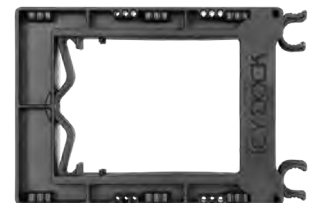


### MB610SP

#### 3 x 2.5" HDD/SSD Mounting Bracket



- Fits standard 3.5" drive bay
- Removable 3 x 2.5" HDD/SSD
- Fits 5-15mm drive height
- Tool-less 2.5" drive installation
- High-density drive design
- 60 screw holes provide max flexibility of installation



## FOR 5.25" DRIVE BAY

### MB343SP

2 x 2.5" HDD/SSD & 1 x 3.5" HDD Mounting Bracket



- Fits standard 5.25" drive bay
- Removable 2 x 2.5" HDD/SSD
- 1 x 3.5" HDD/device slot
- Fits 2.5" drives up to 5-9.5mm height
- Tool-less 2.5" drive installation



### MB343SPO

1 x 3.5" HDD/Device & Ultra Slim ODD Mounting Bracket

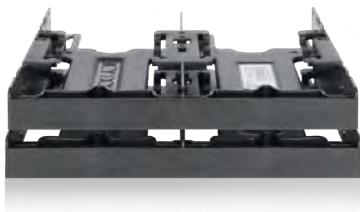


- Fits standard 5.25" drive bay
- 1 x Ultra Slim ODD Slot (9.5mm height)
- 1 x 3.5" HDD/device slot



### MB344SP

4 x 2.5" HDD/SSD Mounting Bracket



- Fits standard 5.25" drive bay
- Removable 4 x 2.5" HDD/SSD
- Fits 5-9.5mm drive height
- Tool-less 2.5" drive installation



### MB344SPO

4 x 2.5" HDD/SSD + (Ultra) Slim ODD Mounting Bracket



- Fits standard 5.25" drive bay
- Removable 4 x 2.5" HDD/SSD
- Fits 5-9.5mm drive height
- 1 x (Ultra) Slim ODD slot (12.7/9.5mm height)
- Tool-less 2.5" drive installation



## EXTERNAL M.2 SSD ENCLOSURE

### MB861U31-1M2B

1 x M.2 NVMe PCIe HDD/SSD USB 3.2 Gen2 External Enclosure



(USB 3.2 Gen2)

- Supports 1 x M.2 NVMe PCIe SSD
- Supports USB 3.2 Gen2 interface (up to 10Gbps transfer speed)
- Fits 2230/2242/2260/2280/22110 M.2 SSD
- Tool-less 2.5" drive installation



1 x **M.2 SSD**

## EXTERNAL U.2 SSD ENCLOSURE

### MB931U-1VB R1

1 x 2.5" U.2 NVMe SSD to USB 3.2 Gen2 Adapter



(USB 3.2 Gen2)

- Supports 1 x U.2 NVMe SSD
- Supports USB 3.2 Gen2 interface (up to 10Gbps transfer speed)
- Fits 7-15mm drive height
- Tool-less U.2 drive installation
- Large slide-switch on/off drive power button
- Thunderbolt 4 compatible
- Compatible with U.2 SSD trays



1 x **U.2 SSD**



## EXTERNAL 2.5"/M.2 SSD ENCLOSURE

### MB104U-1SMB

1 x 2.5" SATA HDD/SSD & M.2 SATA/NVMe SSD to USB 3.2 Gen2 Adapter



(USB 3.2 Gen2)

- Supports 1 x 2.5"/M.2 SATA SSD or M.2 NVMe SSD
- Supports USB 3.2 Gen2 interface (up to 10Gbps transfer speed)
- Fits 2.5" drive up to 15mm height
- Fits 2230/2242/2260/2280/22110 M.2 SSD
- Tool-less 2.5"/M.2 drive installation



### MB031U-1SMB

1 x 2.5"/M.2 SATA SSD to USB 3.2 Gen1 Adapter



(USB 3.2 Gen1)

- Supports 1 x 2.5"/M.2 SATA SSD
- Supports USB 3.2 Gen1 interface (up to 5Gbps transfer speed)
- Fits 2.5" drive up to 15mm height
- Fits 2230/2242/2260/2280/22110 M.2 SSD
- Tool-less 2.5"/M.2 drive installation
- Large slide-switch on/off drive power button



## FOR 5.25" DRIVE BAY

### MB171SP-1B

#### 3.5" SATA/SAS HDD/SSD Backplane Cage



- Fits standard 5.25" drive bay
- Hot-swappable 1 x 3.5" HDD
- Supports SATA III/SAS 3.0 (single channel)
- Tray-less design for easy drive swapping
- Rugged full metal construction



1 x 

### MB876SK-B

#### 2.5"/3.5" SATA/SAS HDD/SSD Backplane Cage



Drive Tray # MB453TRAY-2B

- Fits standard 5.25" drive bay
- Hot-swappable 2.5"/3.5" HDD/SSD
- Supports SATA III and SAS 2.0 (single channel)
- Fits 2.5" drives up to 5-15mm height
- Full aluminum body construction
- Safeguard 2-segment key lock system



1 x  / 1 x 

### MB971SP-B

#### 2.5" + 3.5" SATA HDD/SSD Docking Backplane Cage



- Fits standard 5.25" drive bay
- Hot-swappable 2.5" + 3.5" HDD/SSD
- Supports SATA III
- Fits 2.5" drives up to 9.5mm height
- Supports full height 15mm when only use 2.5" drive
- Eject design to pull drive
- Door-less design for easy drive swapping



1 x  + 1 x 

## FOR DUAL 5.25" DRIVE BAYS

### MB153SP-B

#### 3 x 2.5"/3.5" SATA/SAS HDD/SSD Backplane Cage



Drive Tray # MB453TRAY-2B

- Fits standard 2 x 5.25" drive bay
- Hot-swappable 3 x 2.5"/3.5" HDD/SSD
- Supports SATA III and SAS 3.0 (single channel)
- Fits 2.5" drive up to 5-15mm height
- 80mm cooling fan with full metal body
- Removable tray design for internal drive security



3 x  / 3 x 

### MB901SPR-B R1

#### 2 x 2.5"/3.5" SATA/SAS HDD/SSD Backplane Cage with RAID 1 & JBOD



Drive Tray # MB453TRAY-2B

- Fits standard 2 x 5.25" drive bay
- Hot-swappable 2 x 2.5"/3.5" HDD/SSD
- Supports SATA III
- Fits 2.5" drive up to 5-15mm height
- Built-in hardware RAID 1 & JBOD



2 x  / 2 x 

## FOR TRIPLE 5.25" DRIVE BAYS

### MB155SP-B

#### 5 x 2.5"/3.5" SATA/SAS HDD/SSD Backplane Cage



Drive Tray # MB453TRAY-2B

- Fits standard 3 x 5.25" drive bay
- Hot-swappable 5 x 2.5"/3.5" HDD/SSD
- Supports SATA III/SAS 3.0 (single channel)
- Fits 2.5" drive up to 5-15mm height
- 92mm cooling fan with full metal body
- Removable tray design for internal drive security



5 x  / 5 x 



## Interface Cables

Model Number	Product Name	Length
MB206L-B	<b>SlimSAS 8i SFF-8654 to 2x OCuLink 4i SFF-8611 Cable</b>	50cm
MB306L-B	<b>SlimSAS 8i SFF-8654 to 2x SlimSAS 4i SFF-8654 Cable</b>	50cm
MB406L-B	<b>SlimSAS 8i SFF-8654 to 1x SlimSAS 8i SFF-8654 Cable</b>	50cm
MB323L-B	<b>SlimSAS 4i SFF-8654 to 1x SlimSAS 4i SFF-8654 Cable</b>	50cm
MB302L-B	<b>MCIO 8i SFF-TA-1016 to 2x OCuLink 4i SFF-8611 Cable</b>	50cm
MB310L-B	<b>MCIO 8i SFF-TA-1016 to 2x SlimSAS 4i SFF-8654 Cable</b>	50cm
MB410L-B	<b>MCIO 8i SFF-TA-1016 to 1x SlimSAS 8i SFF-8654 Cable</b>	50cm

Compatible Pairings Guide		
Mobile Racks		Cables
MB699VP-B V2 / MB699VP-B V3	4x OCuLink 4i	MB206L-B / MB302L-B
MB720MK-B V2 / MB720MK-B V3	4x OCuLink 4i	MB206L-B / MB302L-B
MB852M2PO-B	2x OCuLink 4i	MB206L-B / MB302L-B
MB872MP-B	3x OCuLink 4i	MB206L-B / MB302L-B
MB873MP-B / MB873MP-B V2	8x OCuLink 4i	MB206L-B / MB302L-B
MB105VP-B	1x SlimSAS 8i	MB206L-B / MB306L-B / MB406L-B / MB410L-B
MB118VP-B	3x SlimSAS 8i	MB206L-B / MB306L-B / MB406L-B / MB410L-B
MB021VP-B	1x SlimSAS 4i	MB306L-B / MB310L-B / MB323L-B
MB092VK-B	2x SlimSAS 4i	MB306L-B / MB310L-B / MB323L-B
MB833MK-B V2	1x SlimSAS 4i	MB306L-B / MB310L-B / MB323L-B
MB834MK-B V2	2x SlimSAS 4i	MB306L-B / MB310L-B / MB323L-B

## High-Speed Add-on Cards

Model Number	Product Name
MB308A	<b>PCIe X16 Gen4 to Dual Port SlimSAS 8i SFF-8654 AIC with Redriver</b>
MB309A	<b>M.2 M-Key PCIe Gen4 to SlimSAS 4i SFF-8654 Adapter with Redriver</b>

Compatible Pairings Guide		
Mobile Racks	Cables	Add-on Cards
MB699VP-B V2 / MB699VP-B V3	MB206L-B	MB308A (2x SlimSAS 8i)
MB720MK-B V2 / MB720MK-B V3		
MB852M2PO-B		
MB873MP-B / MB873MP-B V2		
MB021VP-B	MB306L-B	
MB092VK-B		
MB833MK-B V2		
MB834MK-B V2		
MB105VP-B	MB406L-B	
MB118VP-B		
MB105VP-B	MB306L-B	MB309A (1x SlimSAS 4i)
MB118VP-B		
MB021VP-B	MB323L-B	
MB092VK-B		
MB833MK-B V2		
MB834MK-B V2		

FOR 5.25" DRIVE BAY

CP116

4 x E1.S/M.2 NVMe SSD Backplane Cage



(PCIe 4.0)

- Fits standard 5.25" drive bay
- Hot-pluggable 4 x E1.S/M.2 NVMe SSD
- Support NVMe 64Gbps per channel
- 2 x Slimline SAS (SFF-8654 8i) connector
- Fits 5.9/8.01/9.5/15mm E1.S drive height
- Fits 2230/2242/2260/2280/22110 M.2 SSD
- Rugged full metal construction

SFF-8654 8i Connector



CP121

8 x E1.S/M.2 NVMe SSD Backplane Cage



(PCIe 4.0)

- Fits standard 5.25" drive bay
- Hot-pluggable 8 x E1.S/M.2 NVMe SSD
- Support NVMe 64Gbps per channel
- 4 x Slimline SAS (SFF-8654 8i) connector
- Fits 5.9/8.01mm E1.S drive height
- Fits 2230/2242/2260/2280/22110 M.2 SSD
- Rugged full metal construction

SFF-8654 8i Connector



CP128

4 x 2.5" SATA/SAS/NVMe(U.2/U.3) SSD/HDD UBM Backplane Cage



- Fits standard 5.25" drive bay
- Hot-pluggable 4 x SAS/SATA/U.2/U.3 SSD/HDD
- Support SATA III/SAS 3.0 (single channel)/NVMe 64Gbps per channel
- 2 x Slimline SAS (SFF-8654 8i) connector for NVMe connection
- 1 x Slimline SAS (SFF-8654 4i) connector for SAS/SATA connection
- Fits 5-15mm drive height
- Rugged full metal construction

SFF-8654 8i & 4i Connector



CP128-1

4 x 2.5" SATA/SAS/NVMe U.3 SSD/HDD UBM Backplane Cage



- Fits standard 5.25" drive bay
- Hot-pluggable 4 x SAS/SATA/U.3 SSD/HDD
- Support SATA III/SAS 3.0 (single channel)/NVMe 64Gbps per channel
- 2 x Slimline SAS (SFF-8654 8i) connector
- Fits 5-15mm drive height
- Rugged full metal construction



FOR DUAL 5.25" DRIVE BAY

CP104

8 x U.2/U.3 NVMe SSD Backplane Cage



(PCIe 3.0)

- Fits standard 2 x 5.25" drive bay
- Hot-pluggable 8 x 2.5" U.2/U.3 SSD
- Supports NVMe 64Gbps per channel
- 8 x OCUlink (SFF-8612) connector
- Fits 5-15mm drive height
- Rugged full metal construction



EXTERNAL M.2/U.2 SSD ENCLOSURE

CP130

CFexpress Type B to M.2 NVMe SSD Adapter Converter



(CFexpress Type B)

- Supports 1 x M.2 NVMe PCIe SSD
- Supports CFexpress Type B interface (up to 16Gbps transfer speed)
- Fits 2230/2242/2260/2280/22110 M.2 SSD
- Tool-less M.2 drive installation



## FOR PCIE EXPANSION SLOT

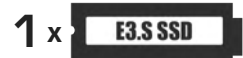
### CP138

1 x E3.S NVMe SSD to PCIe 5.0 x4 Removable Mobile Rack



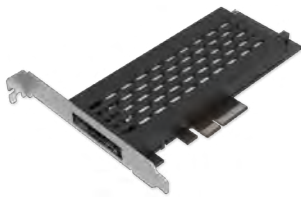
(PCIe 5.0)

- Fits standard PCIe 5.0 x4/x8/x16 slot
- Removable 1 x E3.S NVMe PCIe SSD
- Supports up to 128Gbps transfer speed
- Fits 7-15mm drive height
- Rugged full metal construction
- 50mm skeleton cooling fan to cool drive



### CP114

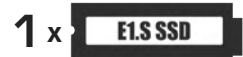
1 x E1.S NVMe SSD to PCIe 4.0 x4 Removable Mobile Rack



(PCIe 4.0)

- Fits standard PCIe 4.0 x4/x8/x16 slot
- Removable 1 x E1.S NVMe PCIe SSD
- Supports up to 64Gbps transfer speed
- Fits 5.9mm drive height
- Tool-less E1.S drive installation

SFF-8654 8i Connector



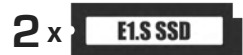
### CP135

2 x E1.S NVMe SSD to PCIe 3.0 x8 RAID Removable Mobile Rack with RAID 0 / 1 / BIG / JBOD



(PCIe 3.0)

- Fits standard PCIe 3.0 x8/x16 slot
- Removable 1 x E1.S NVMe PCIe SSD
- Supports up to 32Gbps transfer speed
- Fits 9.5/15mm drive height
- Rugged full metal construction
- 50mm skeleton cooling fan to cool drive
- Built-in hardware RAID 0 / 1 / BIG / JBOD



FOR PCIE EXPANSION SLOT

CP125

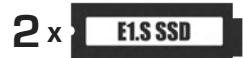
2 x E1.S NVMe SSD to PCIe 5.0 x8 Backplane Mobile Rack with Heat Sink & Fan (PCIe Bifurcation Required)



(PCIe 5.0)

- Fits standard PCIe 5.0 x8 slot
- Removable 2 x E1.S NVMe PCIe SSD
- Supports up to 128Gbps transfer speed
- Fits 9.5mm drive height
- Tool-less E1.S drive installation
- 50mm blower cooling fan to cool drive

SFF-8654 8i Connector



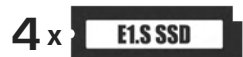
CP074-1

4 x M.2 NVMe SSD to PCIe 4.0 x16 Backplane Mobile Rack with Heat Sink & Fan (PCIe Bifurcation Required)



(PCIe 4.0)

- Fits standard PCIe 4.0 x16 slot
- Removable 4 x M.2 NVMe PCIe SSD
- Supports up to 64Gbps transfer speed
- Fits 2230/2242/2260/2280 M.2 SSD
- Tool-less M.2 drive installation
- 50mm blower cooling fan to cool drive



# ICY DOCK®

global.icydock.com

## USA

Tel: +1 626-9568800  
E-mail: tech@icydock.com  
11740 Clark St, Arcadia, CA 91006

## TAIWAN

Tel: +886 2-29993251  
E-mail: marketing@cremax.com.tw  
241新北市三重區重新路5段609巷18號2樓

## CHINA

Tel: +86 13670060868  
E-mail: service@icydock.net.cn  
深圳市宝安区西乡金海路17号金海商务大厦2栋205

## GERMANY

Tel: +49 20393151940  
E-mail: euinfo@icydock.com  
Weidenweg 21H. 47059 Duisburg

## FRANCE

Tel: +33 164884264  
E-mail: contact@icydock.fr  
4, Allée Trait d'Union 77127 Lieusaint

## JAPAN

Tel: +81 3-58264155  
E-mail: sales@seijinshoji.co.jp  
東京都文京区本郷3-19-7本郷三宝ビル6階